

**AluTech[®]**
Aluminium Composite Panel | 100 | 200

KOMPOZİT PANEL
RENK KARTELASI

COMPOSITE PANEL
COLOR CHART

Dünyanızı Renklendirir
Colors Your World

Sistem 
A L Ü M İ N Y U M



AB-900

Beyaz / White



AB-901

Kırık Beyaz / Pure White



AB 100

Krem / Cream



AB-700

Gümüş / Silver



AB 703

Parlak Gümüş / Bright Silver



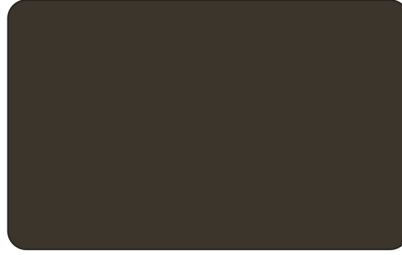
AB-701

Füme / Umbra Grey



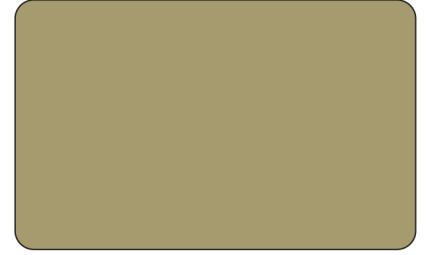
AB-704

Metalik Koyu Gri / Dark Grey Metallic



AB-702

Antrasit Gri / Anthracite Grey



AB-120

Şampanya / Champagne



AB-130

Bronz / Bronze



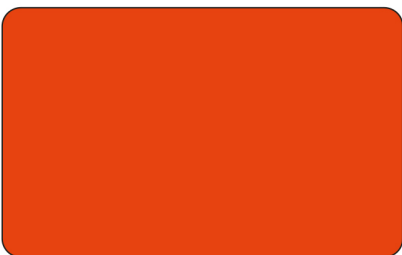
AB-300

Kırmızı / Red



AB-301

Bordo / Burgundy



AB-200

Turuncu / Orange



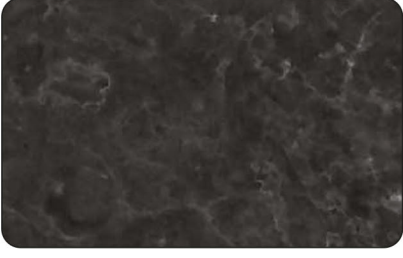
AB-500

Mavi / Blue

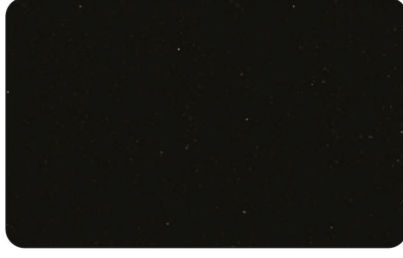


AB-450

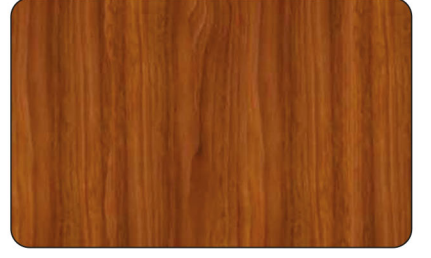
Siyah / Black



AB-1101 Siyah Granit / Black Granite



AB-1400 Simli Siyah / Sparkling Black



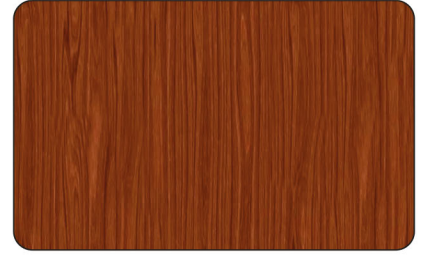
AB-1000 Açık Ceviz / Light Walnut



AB-1001 Koyu Ceviz / Dark Walnut



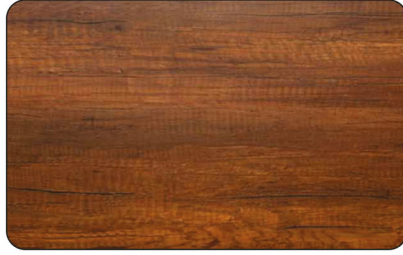
AB-1002 Maun / Mahogany



AB-1003 Çam / Pine



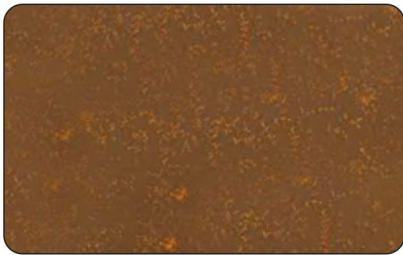
AB-1005 Tik / Teak



AB-1006 Kalın Altın Meşe / Thick Golden Oak



AB-1102 Dokulu Antrasit / Antracite Texture



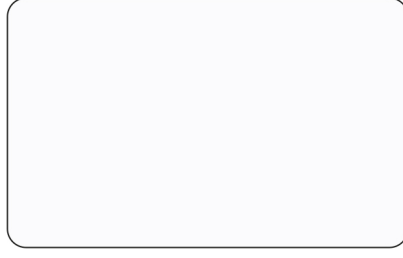
AB-1104 Korten Çelik / Corten Steel





SB-900

Beyaz / White



SB-901

Kırık Beyaz / Pure White



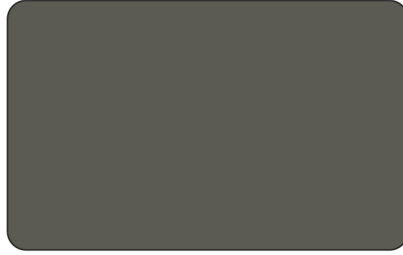
SB-100

Krem / Cream



SB-700

Gümüş / Silver



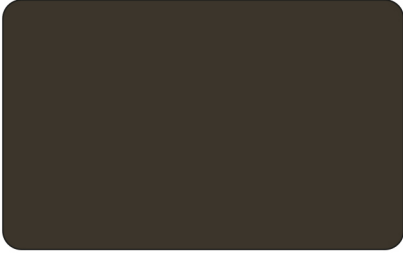
SB-701

Koyu Gri / Dark Grey



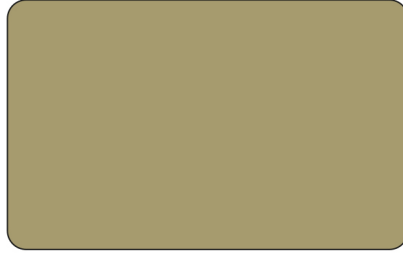
SB-705

Füme / Umbra Grey



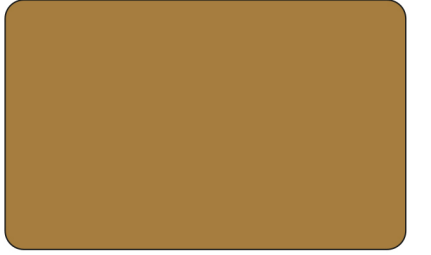
SB-702

Antrasit Gri / Anthracite Grey



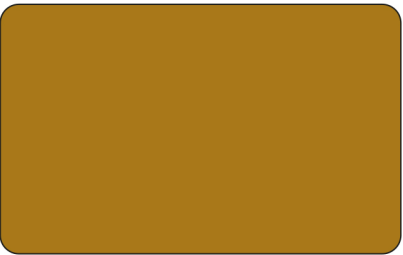
SB-120

Şampanya / Champagne



SB-130

Bronz / Bronze



SB-110

Altın Sarısı / Gold



SB-140

Bakır / Copper



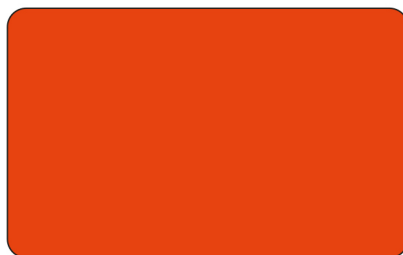
SB-300

Kırmızı / Red



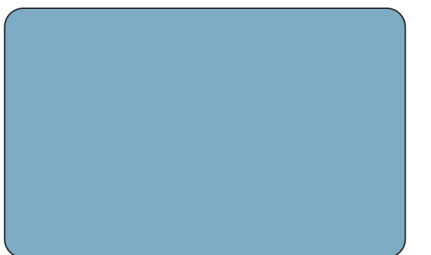
SB-301

Bordo / Burgundy



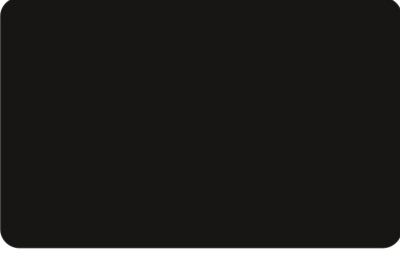
SB-200

Turuncu / Orange



SB-501

Azul Mavi / Azul Blue



SB-450

Siyah / Black



SB-500

Mavi / Blue



SB-1000

Açık Ceviz / Light Walnut



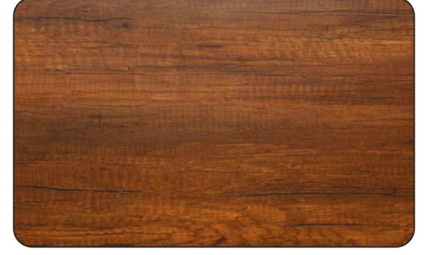
SB-1001

Koyu Ceviz / Dark Walnut



SB-1005

Tik / Teak



SB-1006

Kalın Altın Meşe / Thick Golden Oak



SB-1007

Dokulu Tik / Textured Teak



SB - 1008

Klasik Ağaç / Vintage Wood



Neden Alüminyum Kompozit Panel?

Alüminyum kompozit panel iki adet alüminyum levha arasındaki düşük yoğunluklu polietilen malzemenin birleşiminden oluşur. Üstün yüzey dayanımlı, pürüzsüz, estetik, dayanıklı ve bakımı kolay bir paneldir.

Why ACP?

Aluminium composite panel is composed of low density polyethylene between two aluminium sheets. It has superior surface resistance, smooth appearance, and it is aesthetic, durable and easy maintenance.

Estetik, Dayanıklı ve Bakımı Kolay Bir Cephe Çözümüdür.

It's an aesthetic, highly durable maintenance friendly facade solution.



Genel Özellikleri / General Features

- **Dayanıklı, sert ve hafif** / Highly durable rigid and light weight
- **Sınırsız renk ve proje desen seçeneği** / Unlimited color & design option
- **Ses ve ısı izolasyonu** / Sound & heat isolation
- **Tüm çevre koşullarına karşı dayanıklı** / Resistant to all weather conditions
- **Hızlı ve kolay montaj** / Easy and fast application
- **Estetik ve şık görünüm** / Aesthetic and elegant appearance
- **%100 geri dönüştürülebilir** / Aesthetic and elegant appearance
- **Çevreye duyarlı** / Eco-Friendly



Hatırlatmalar / Reminders

Renk bütünlüğünün sağlanabilmesi için bir defada sipariş verilmesi önerilir.

To ensure the color consistency, placing total requirements in one order is recommended.

Bütün kompozit panellerin ok yönünde monte edilmesi tavsiye edilmektedir. Metalik renklerde ve desenli ürünlerde montaj yönü renk bütünlüğünün sağlanabilmesi için zaruridir.

It is recommended that all composite panels be installed in the direction of the arrow. In metallic colors and patterned products, the mounting direction is essential to ensure color integrity.

Siparişlerinizde 1250 mm ve 1500 mm levhalar birlikte kullanılacak ise sipariş aşamasında yazılı olarak bilgi verilmesi renk bütünlüğünün sağlanabilmesi için zaruridir.

If your orders are to be used together with 1250 mm and 1500 mm plates, it is necessary to provide written information at the order stage in order to ensure color integrity.

Uygulama Alanları

Dış ve İç Cephe Kaplama, Alışveriş Merkezleri, Otel, Sergi ve Fuar alanları, Çeşitli Restorasyon ve Dekorasyon Uygulamaları, İşaret Levha ve Reklam Panoları, Stant Uygulamaları, Ofis Bölme Sistemleri, İç Cephe Kaplamaları, Mağaza Görselleri, Taşıt Uygulamaları

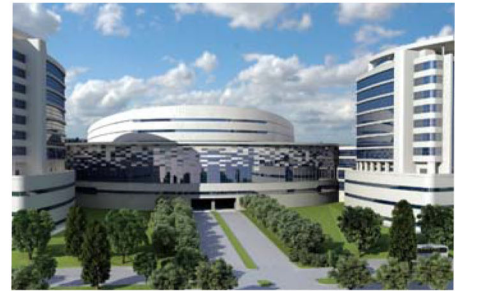
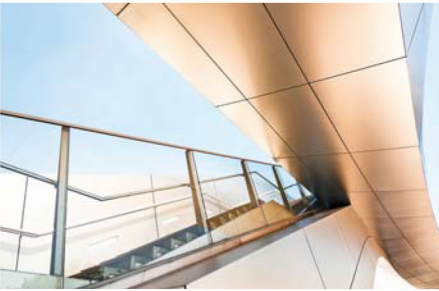
Application Areas

Exterior Architecture, Interior Design, All Facades, Curtain Wall, Industrial Application, Transport Signage and Furniture, Advertisement Stands, Office Partitions, Interior Design, Retail / Industrial / Display, Vehicle Applications



Panel Ölçüleri / Panel Dimensions

Standart Panel Ölçüsü / Standard Panel Size	: 4 mm x 1250 mm x 3200 mm
Panel Kalınlığı / Panel Thickness	: 2 mm - 6 mm
Panel Boyu / Panel Length	: 2000 mm - 6000 mm
Panel Eni / Panel Width	: 1000 mm - 1500 mm



Üretim ve Panel Toleransları / Tolerances

Panel Kalınlığı / Panel Thickness	: $\pm 0,2$ mm
Panel Boyu / Panel Length	: -0 mm/+ 4 mm
Panel Eni / Panel Width	: -0 mm/+ 2 mm
Diagonal Fark / Diagonal Difference	: max. 3 mm
Akma Mukavemeti / Yield Strength	: 26 N mm ²
Çekme Mukavemeti / Tensile Strength	: 32 N mm ²
Yüksek Isıda Çekme Mukavemeti / Tensile Strength in High Temperature	: 32 N mm
Kenar Kayması Toleransı / Edge Shift Tolerance	: max. 2 mm



ALUTECHBOND®

A2, B1, B2 ve LDPE SINIFLARINDA DÜNYA KALİTE STANDARTLARINA UYGUN OLARAK ÜRETİLİR.

Production of A2, B1, B2 and LDPE types panels according to world quality standards.

ALUTECHBOND® 100 A2

0.5 mm kalınlığındaki iki alüminyum levha arasında özel yanmaz mineral dolgu bulunan bir kompozit paneldir. Kalınlığı 4 mm olan ALUTECHBOND® 100 A2 kompozit panelin üst levhası PVDF, alt levhası ise paslanmayı önleyici PE astar boyası ile kaplanmıştır. Uluslararası standartlara uygunluk testleriyle üstün kalitesi tescillenmiş ALUTECHBOND® 100 A2 **Sistem Alüminyum A.Ş.** güvencesiyle üretilerek 40'dan fazla ülkeye ihraç edilmektedir.

ALUTECHBOND® 100 A2

ALUTECHBOND® 100 A2, is a composite panel consisting of two 0,50 mm thickness aluminium sheets and a mineral filled fire resistant core. Top sheet is coated with PVDF and bottom sheet is coated with anticorrosive PE backcoat. ALUTECHBOND® 100 A2 composite panels are exported to more than 40 countries and it's superior quality is certified by international standards compliance tests.



Sistem AI
A L Ü M İ N Y U M



Merkez / Head Office
Akçaburgaz Mah. 3055. Sk. No.4
34522 Esenyurt / İstanbul - TURKEY
Tel : +90 212 886 87 87
Fax : +90 212 886 53 29

Fabrika / Factory
Ergene1 OSB, Vakıflar OSB Mah. D100 Cad.
No: 13/1 59930 Ergene / Tekirdağ - TURKEY
Tel : +90 282 693 27 27

sistem@sistemal.com
www.sistemal.com